



INDOFINE Chemical Company, Inc.

121 Stryker Lane, Bldg. 30, Suite 1 • Hillsborough, NJ 08844 • U.S.A.

Phone: (908) 359-6778 • FAX: (908) 359-1179

website: www.indofinechemical.com

e-mail: chemical@indofinechemical.com

CERTIFICATE OF ANALYSIS

Catalog Number: G-004

Product Name: **GALLACETOPHENONE**

CAS Number: [528-21-2]

Lot Number: 95010

Chemical Formula: C₈H₈O₄

Molecular Weight: 168.15

Melting Point: 165-167°C

Appearance: Cream color crystalline powder

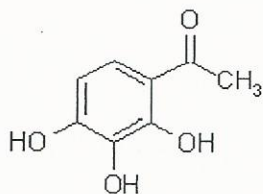
TLC: n-Hexane: Ethyl acetate (7:3)

Solubility: Soluble in DMSO

NMR Spectrum: Enclosed (conforms to the structure)

Storage: Store in a cool, dry place

Purity(HPLC): 99.70%





INDOFINE Chemical Company, Inc.

121 Stryker Lane, Bldg. 30, Suite 1 • Hillsborough, NJ 08844 • U.S.A.

Phone: (908) 359-6778 • FAX: (908) 359-1179

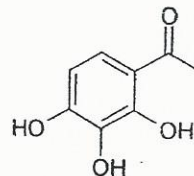
website: www.indofinechemical.com

e-mail: chemical@indofinechemical.com

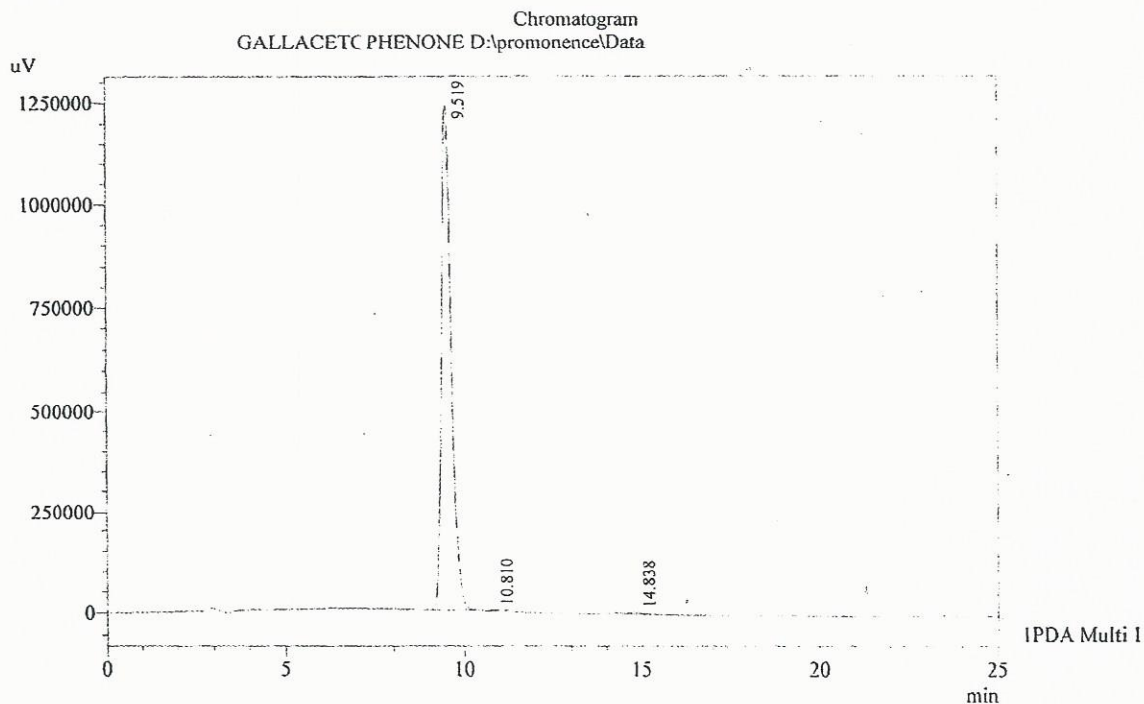
HPLC ANALYSIS

Acquired by : Admin
 Sample Name : GALLACETOPHENONE
 Sample ID : Lot:95010
 Injection Volume : 20 uL
 Data Filename : 090615L.lcd
 Method Filename : Linear Gradient.M.lcm

Catalog No.: G-004
 Product Name: Gallacetophenone
 Lot No.: 95010



Column : LUNA C-18, (250mm x4.6mm 5.0µ)
 Flow : 1.000 mL/min.
 Mobile Phase : A(0.05% TFA in Water) B(Acetonitrile)
 0.01 90 10
 12.0 10 90
 20.0 10 90
 23.0 90 10
 25.0 90 10
 Diluent : Acetonitrile



1 PDA Multi 1 / 230nm 4nm

PeakTable

PDA Ch1 230nm 4nm

Peak#	Name	Ret. Time	Area	Area %	Relative Retention Time
1	GALLACETOPHENONE	9.519	23323388	99.70	1.00
2	RT:10.810	10.810	12485	0.05	1.14
3	RT:14.838	14.838	56824	0.24	1.56
Total			23392697	100.00	



INDOFINE Chemical Company, Inc.

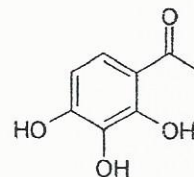
121 Stryker Lane, Bldg. 30, Suite 1 • Hillsborough, NJ 08844 • U.S.A.

Phone: (908) 359-6778 • FAX: (908) 359-1179

website: www.indofinechemical.com

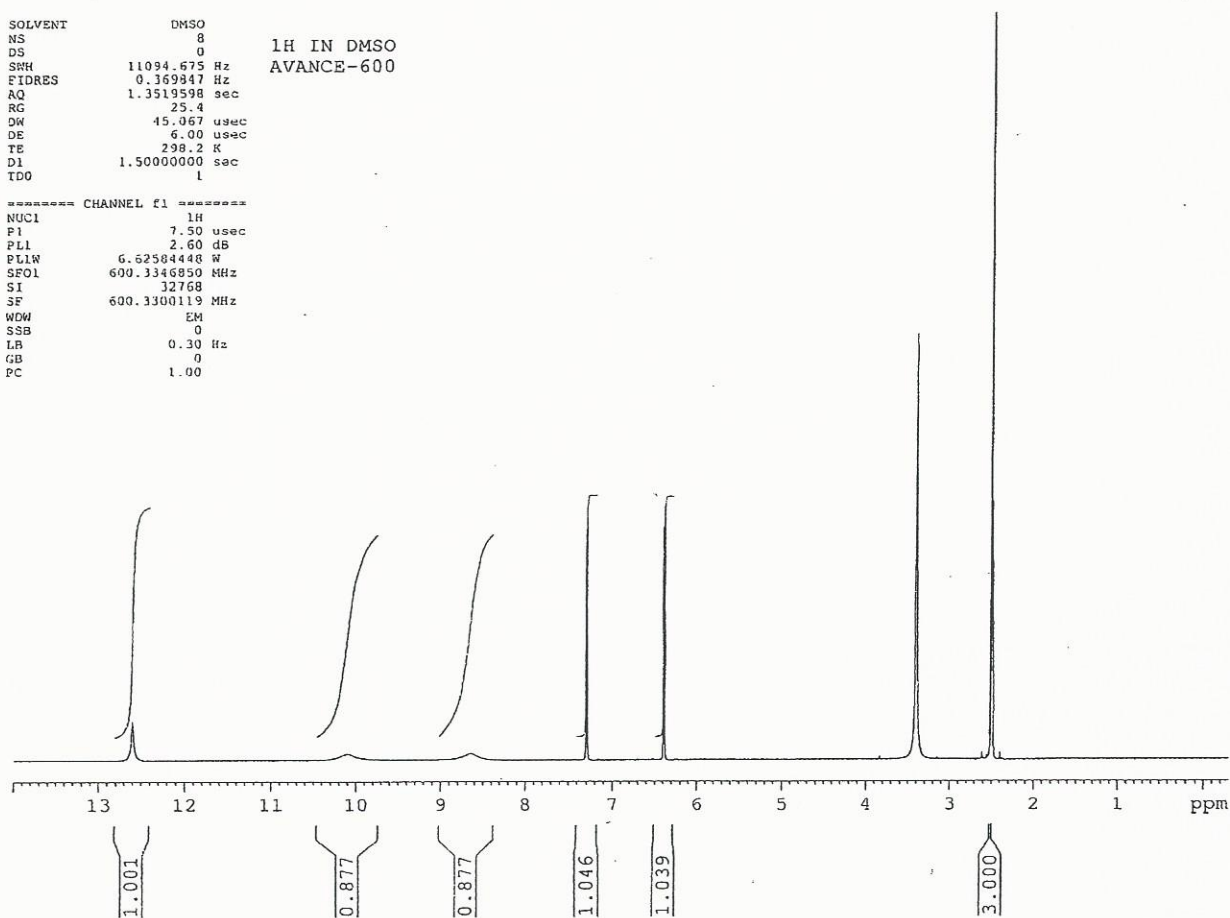
e-mail: chemical@indofinechemical.com

Catalog No.: G-004
Product Name: Gallacetophenone
Lot No.: 95010



SOLVENT DMSO
NS 8
DS 0 1H IN DMSO
SMH 11094.675 Hz AVANCE-600
FIDRES 0.369847 Hz
AQ 1.3519598 sec
RG 25.4
DW 45.067 usec
DE 6.00 usec
TE 298.2 K
D1 1.50000000 sec
TDO 1

==== CHANNEL f1 =====
NUC1 1H
P1 7.50 usec
PL1 2.60 dB
PL1W 6.52584448 W
SFOL 600.3346850 MHz
SI 32768
SF 600.3300119 MHz
WDW EM
SSB 0
LB 0.30 Hz
GB 0
PC 1.00





INDOFINE Chemical Company, Inc.

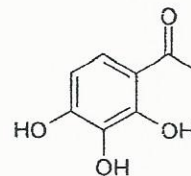
121 Stryker Lane, Bldg. 30, Suite 1 • Hillsborough, NJ 08844 • U.S.A.

Phone: (908) 359-6778 • FAX: (908) 359-1179

website: www.indofinechemical.com

e-mail: chemical@indofinechemical.com

Catalog No.: G-004
Product Name: Gallacetophenone
Lot No.: 95010



SOLVENT DMSO
NS 8
DS 0
SWH 11094.675 Hz
FIDRES 0.369847 Hz
AQ 1.3519598 sec
RG 25.4
DW 45.067 usec
DE 6.00 usec
TE 298.2 K
D1 1.50000000 sec
TDO 1

1H IN DMSO
AVANCE-600

***** CHANNEL f1 *****
NUC1 1H
P1 7.50 usec
PL1 2.60 dB
PL1W 6.62584448 W
SF01 600.3346830 MHz
SI 32768
SF 600.3300119 MHz
WDW EM
SSB 0
LB 0.30 Hz
GB 0
PC 1.00

